

Tested and Approved



Certificate No.: C114707 Issue No.: 1 Date of Issue: 28 January 2009

TEST CERTIFICATE FOR PRODUCT TESTED USING THE PERFORMANCE REQUIREMENTS CONTAINED IN BS EN 1443 : 1999 AND THE ASSOCIATED DRAFT EUROPEAN CHIMNEY STANDARDS

This is to certify that

The Building Services Research and Information Association

has tested the product described below and has satisfied themselves that the product meets the Pass / Fail values stated on this certificate based on the criteria contained in BS EN 1443 : 1999 and the associated draft European standards for chimney products.

Product covered by this certificate

ELDFAST FLUE LINING MATERIAL

Supplier (UK distributor)

Landy Vent UK Ltd
25 High Street
Sturley
Birmingham
B90 2JN

Test standards

BS EN 1443 : 1999 - Chimneys - General requirements
prEN 1856-2 : (rev 0) June 1998 - Chimneys - Requirements for metal chimneys - Metal liners and connecting flue pipes
prEN 1857 : (rev 0) October 2009 - Chimneys - Components - Concrete flue liners

Product designation : T600 N1 S D3

Summary of test data:

EUROPEAN STANDARD CLAUSE			DESCRIPTION	COMMENTS
BS EN 1443	prEN 1856-2	prEN 1857		
6.4.1	6.3	6.3	Gas tightness	Pass N1 and N2 classifications
6.3.1	6.4.1	6.3	Heat resistance	Pass 1856 class 1 and 2
6.3.2	6.4.1	6.2	Soot fire resistance	Pass 3 classification
-	-	6.4	Abrasion resistance	Pass
-	C7.3.1.2	-	Deformation check	Pass

For further details of the testing reference must be made to BSRIA report No. 19024.3 dated January 2009.

Full details of the product and conformance with Approved Document J of the Building Regulations can be found in the Annex to this certificate numbered A134707-1.

Page 1 of 1

The Building Services Research and Information Association, Old Dock Road West, Stratford, Berkshire RG12 7AA, UK
Tel: +44 (0) 1344 420171 Fax: +44 (0) 1344 487515 e-mail: bsria@bsria.co.uk web: www.bsria.co.uk

Performance tested and approved:

- Resistance to thermal shock
- Resistance to sootfire
- Effect of Sweeping
- Gas tightness before and after thermal shock
- Resistance to attack by acid condensation

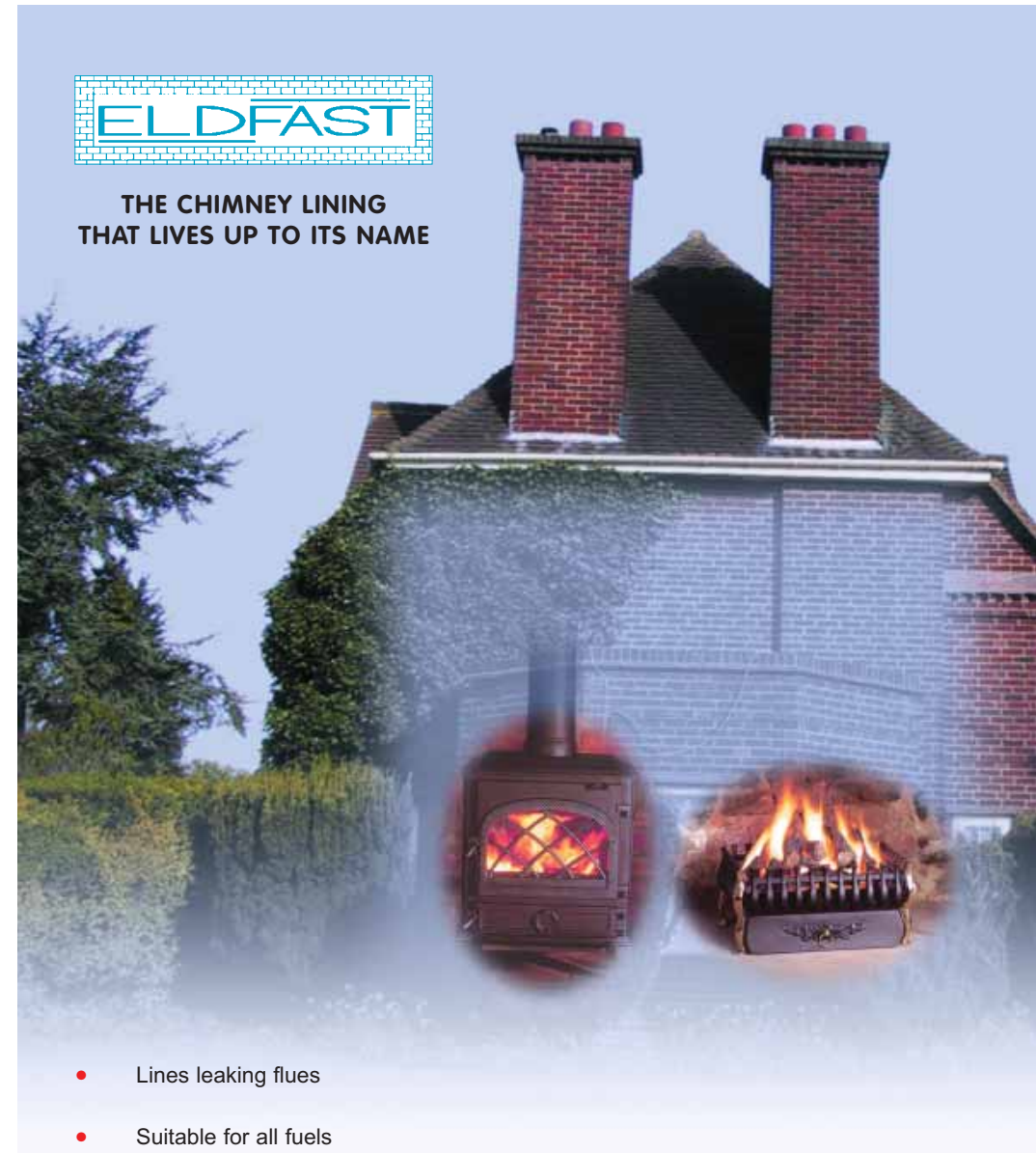
BSRIA Approved:

- BS. EN 1443 : 1999
- Pr EN 1856 - 2
- Pr EN 1857
- Product Designated T600 N1 S D3


Landy Vent UK Ltd
01527 857 814



THE CHIMNEY LINING THAT LIVES UP TO ITS NAME



- Lines leaking flues
- Suitable for all fuels
- Class 1 suitable for stoves and open fires
- Unique applications to smaller flue voids e.g. clay liners, gas flue blocks
- Designed to minimise disturbance to the household during installation

Approved contractor's stamp

Photograph "Courtesy of Gazco Ltd"

Leaking Chimneys

The ravages of time, wind and weather, condensation, frost damage and chimney fires are some of the reasons why chimneys start leaking.

Leakage can give rise to a number of problems, such as the smell of smoke indoors, inadequate updraught, the risk of fire or carbon monoxide poisoning

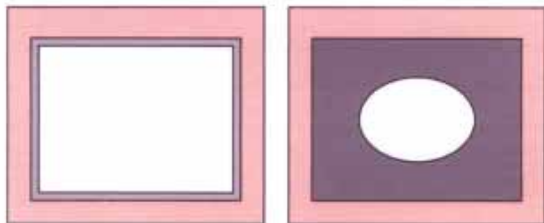


Chimney cleaning

Before starting sealing and repair work the chimney should be cleaned mechanically to remove soot, tar and loose particles with steel brushes.



PRESERVING CROSS SECTIONAL AREA



 Masonry flue (for example)	 Free gas area
 Eldfast coating (nominal thickness 3mm)	 A traditional cast in-situ coating

Eldfast

has been developed to meet today's strict requirements and has all the characteristics you would expect of a modern lining and repair agent.

Sealing a chimney

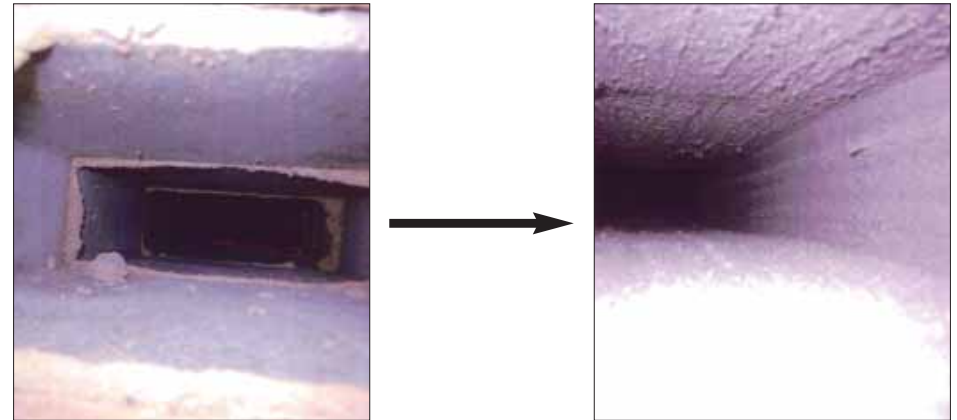
After lining with the Eldfast method you will have a chimney that is leak-proof, very hard-wearing, completely fireproof, and gives a better updraught as a consequence.



Eldfast

is a ceramic material that does not contain lime or cement and can therefore withstand continuous exposure to extreme temperatures having been rigorously tested by Wimlas and BSRIA to conform to current building regulations & requirements after the 1st April 2002 changes.

An Eldfast Lining Transforms a badly performing gas flue block...



Utilising some adaptations to the installer's tooling (for which Landyvent are seeking patent), even gas flue blocks can be cleaned and lined, making full use of the nominal coating thickness of the Eldfast system in order to retain those vital minimum flue measurements. Obviously this same benefit is applicable to several similar types of flue construction: e.g. concrete flue blocks & clay liners which can also be lined and sealed using Eldfast.